

Wondering what to expect on our study days?

The study days are designed to incorporate a number of preceptee's from a variety of backgrounds to discuss relevant topics that can be applied to everyone's practice.

The study days will run throughout the year and will be pre-booked by the Student Support and Workforce Development Team; protected learning time will be provided to allow preceptee's to attend these sessions.

Introduction

A welcome to the preceptorship programme, where we discuss our reasons for becoming the professional we are.

Study Day 1

We discuss the transition from student to professional and the changes we have observed and how we are developing.

Study Day 2

We assess the importance of other teams and team-work along the patients journey.

Study Day 3

We discuss the importance of communication through our working lives and think about skills we may need to acquire.

Study Day 4

We learn to support students on an NMC approved course.

Study Day 5

We look into progressing beyond preceptorship and highlight the important factors for career progression and developing leadership and management skills.

Have more questions? Please do not hesitate to get in touch.



Contact Details

Student Support and Workforce Development

Switchboard: 01226430000

Office: 01226432157

Practice Educator: 01226436070

Preceptorship E-mail:
bdg-tr.preceptorship@nhs.net

Workforce Development E-mail:
bdg-tr.workforcedevelopment@nhs.net

Address: Student Support and Workforce Development, Block 2, First Floor, Barnsley Hospital, Gawber Road, Barnsley, S75 2EP



NHS

Barnsley Hospital
NHS Foundation Trust

Preceptorship Programme



What is preceptorship?

The Department of Health (2010) defines preceptorship as 'a period of transition for the newly registered practitioner during which time he or she will be supported by a preceptor, to develop their confidence as an autonomous professional, refine skills, values and behaviours and to continue on their journey of life-long learning.'

Throughout preceptorship we discuss topics and support you to meet the following criteria:

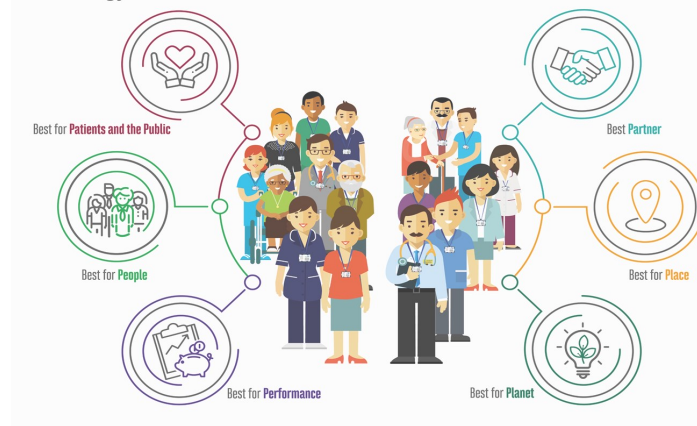
- Accountability
- Career development
- Communication
- Dealing with conflict/managing difficult conversations
- Delivering safe care
- Emotional intelligence
- Leadership
- Quality improvement
- Resilience
- Reflection
- Safe staffing/raising concerns
- Team working
- Medicines management (where relevant)

Who can be a preceptee?

We open our preceptorship programme to all staff from any: allied health professional, nursing, nursing associate and midwifery background.

- A practitioner returning to practice after completing a return to practice programme
- Entering practice for the first time, usually due to being newly qualified
- Entering a new field of practice following, a second registerable qualification
- Moving from one practice setting to another (community to acute trust)

Our Strategy 2022-2026



Why Barnsley?

Barnsley Hospital NHS Foundation Trust is a high performing Trust achieving a 'Good' rating in our most recent Care Quality Commission (CQC) assessment, and achieving significant progress in the delivery of our strategic objectives. We are proud of the commitment of our staff to ensuring a strong and sustainable future for this organisation which is highly valued by our local communities.

As part of our multiprofessional preceptorship package, we offer:

- 12 month preceptorship with monthly support
- An allocated preceptor
- A dedicated Practice Educator for Preceptorship
- Preceptorship Champions
- An induction to preceptorship
- 5 tailored study days

